

PROPOSED GREENHOUSE GAS REDUCTION AND RENEWABLE ENERGY PARTNERSHIP PLAN NOVEMBER 24, 2008

MARIN COUNTY, MARIN CITIES, TOWNS AND SPECIAL DISTRICTS AND PACIFIC GAS AND ELECTRIC COMPANY

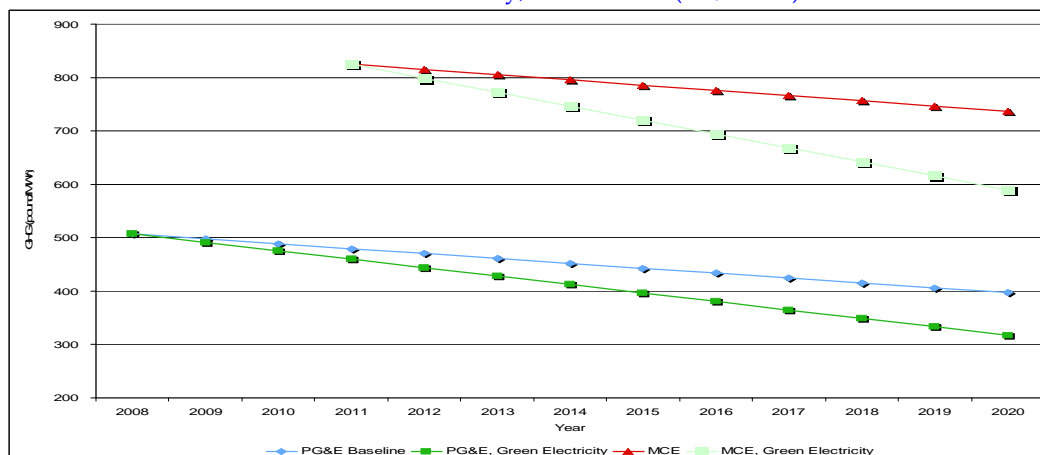
Introduction

The County of Marin and the cities within Marin County have established aggressive greenhouse gas emission reduction goals. PG&E is committed to collaborating with all cities and counties that it serves to help them achieve their environmental objectives associated with energy use. It is in this spirit that PG&E proposes a partnership plan with local governments within Marin that provides a pathway to achieve their climate change objectives faster, cheaper and better than any alternative.

The following are key elements for a proposed “Marin County – PG&E Greenhouse Gas Reduction and Renewable Energy Program” for sponsorship by interested Marin local governments (hereafter referred to as Marin) and PG&E. Under the proposed Partnership Plan, PG&E would sponsor aggressive greenhouse gas reduction programs and supply renewable energy to retail electricity customers in Marin as a part of PG&E’s traditional utility service.

Our partnership plan would **reduce the rate of greenhouse gas emissions from electricity in the County by nearly 40 percent by 2020** relative to their already low starting point. In fact, as the following chart shows, our partnership plan would start in 2010 with lower greenhouse gas emissions than the Marin Clean Energy (MCE) Community Choice Aggregation (CCA) plan and continue to reduce greenhouse gas emissions even lower than Marin Clean Energy every year through 2020.

Figure 1 – Greenhouse Gas Emissions Intensity of Electric Supply,
Marin County, 2010 – 2020 (lbs/MWh).



Source for Figure 1: Marin -PG&E Partnership estimates based on CPUC-Energy Commission AB 32 Customer Energy Efficiency (CEE) Reference Case and Renewables Aggressive Case. Information is subject to removal of obstacles to renewables development. Marin Clean Energy data line is based on customer default to Light Green (25% renewables) in 2010-11, growing at same rate as PG&E by 2020.

Opportunity

Tremendous opportunity exists for PG&E and Marin to use new approaches for greenhouse gas (GHG) emissions reduction, energy management and increased use of renewable energy without exposing itself, the cities, our customers and taxpayers to the uncertainty and risk of a plan not co-sponsored by PG&E. PG&E commits to work with Marin to reduce GHG emissions through a variety of integrated strategies that include **Community Renewable Energy, Green Electricity, Energy Efficiency, Demand Response, Land Use and Green Workforce Development Programs**. PG&E's intent is to explore these integrated approaches in a collaborative partnership with Marin. PG&E is also exploring these approaches with other communities, but if Marin moves forward expeditiously, the Marin-PG&E Partnership Plan will be among the first regional all-encompassing climate change of its kind in California and possibly the nation.

Timeframe

The Marin—PG&E Greenhouse Gas Reduction and Renewable Energy Partnership Plan would begin as early as January 1, 2010, if we move expeditiously and work together to hammer out the details and subject to any necessary approvals by the California Public Utilities Commission (CPUC). In order to ensure the effectiveness of the Partnership Plan, the Plan would be designed to be modified, extended or terminated upon the request of either Marin or PG&E after initial phases. The following table summarizes what we believe to be the significant advantages of the Marin - PG&E Partnership Plan compared to the Marin Clean Energy Community Choice Aggregation plan:

Figure 2 – Advantages of Marin-PG&E Partnership

Element	Marin-PG&E Partnership	Marin Clean Energy
Annual GHG impact by 2020	Reduction of 102,000 metric tons/yr	Increase of 51,000 metric tons/yr
GHG/MWh in 2020	318 lbs/MWh	590 lbs/MWh
New renewables in development	3684 MW	0 MW
County/City debt and liability exposure	None	\$475 million long-term debt plus \$22 million short-term debt
County/City guarantee for debt and liability	No	Likely
Customer choice	Yes	Automatic enrollment
Customer base	Stable	Uncertain

Key Program Components of Proposed Partnership

Element #1: Increased Use of Renewable Energy and Green Electricity in Marin

PG&E and Marin's collaboration would entail the pursuit of options to increase the deployment and use of renewable energy resources in Marin, including: increased utilization of existing PG&E programs, and collaboration to promote legislative and regulatory changes for the development of new programs when needed. The Marin-PG&E Renewables and Green Electricity Program provides a way for Marin to meet its objectives without exposing the local governments, electricity consumers and taxpayers to the uncertainty and risk of a Community Choice Aggregation program. PG&E offers the following:

Proposed Program Components for Renewable Energy and Green Electricity in Marin

1. [PG&E Commitment to Marin Renewables Projects](#). PG&E will provide renewable energy products to retail electricity customers in Marin under terms and conditions comparable to renewable energy supply agreements available in the marketplace.
2. [Locally Developed Renewables Projects](#). PG&E and Marin will explore financing, procuring, constructing, operating and maintaining solar energy photovoltaic (PV) facilities and other desirable renewable energy facilities at sites identified and approved by Marin. The output from these projects would be sold to customers in Marin who voluntarily choose to have their electricity supply come from these local, community-based renewable energy facilities.
3. [Priority for Marin County Public Services](#). Marin would have first call on the output from the local renewable energy facilities to serve their jurisdictions' energy needs.
4. [Financing by PG&E Marin and/or Third Parties](#). PG&E would finance and recover the costs of the Marin - PG&E Renewable and Green Electricity Program directly from customers signing up for the program and under direct regulatory review by the CPUC. Marin local governments could choose to finance a portion or all of these projects, either directly or indirectly, as they desire. Third parties may also participate in the financing.
5. [Citizen Choice](#). Customer participation in the Marin -PG&E Renewable and Green Electricity Program would be voluntary. No customers would be

automatically enrolled under the program without their affirmative, up-front, written consent.

6. [Reliance on Proven Expertise, Protected by CPUC Oversight](#). PG&E would be responsible for supplying renewable energy to Marin customers under regulations established by the CPUC. PG&E would use its bulk power purchasing strength and energy procurement expertise to maximize the customer benefits of the Marin - PG&E Renewable Energy Green Electricity Program. There would be no reliance by customers on unregulated third party electricity suppliers, generators, energy marketers or traders.

7. [Long-Term Commitment to Programs](#). The program commitments of participating customers, including Marin local governments, would be of sufficient duration so that the capital and financing costs of the facilities would be recovered without risk of stranded costs or debt being incurred by either PG&E or the Marin as a result of customers choosing other electricity providers at some future date.

Renewable Energy and Green Electricity in Marin Proposed Action

- PG&E would partner with Marin to mutually determine which program elements are best suited for helping Marin to cut GHG emissions and increase renewables in an integrated resource planning approach.

- PG&E will leverage its existing Solar Schools Program, its customer services and distribution chain, and its relationships with local Marin solar vendors, installers and manufacturers to maximize the market penetration and deployment of solar PV systems and other renewables in Marin.

- PG&E will work with Marin to identify strategies to extend solar benefits and other renewables to low income residents, apartments and the general private sector.

In addition to the Proposed Plan Elements discussed above, PG&E also offers its current extensive programs and services as well as additional potential programs to increase the use of renewables and reduce GHGs:

Existing and Potential PG&E Distributed Generation Programs	
Elements of Existing PG&E Program	Proposed Action
1. <u>California Solar Initiative (CSI)</u> : is a statewide effort with a goal of creating 3,000 megawatts of new, solar-produced electricity by 2017 - moving the state toward a cleaner energy future and helping lower the cost of solar systems for consumers. As the administrator for this program within its service area, PG&E expects to provide close to \$1 billion in financial incentives for solar projects that can be installed at homes, businesses	<ul style="list-style-type: none"> • PG&E will partner with Marin on joint solar education and outreach using existing PG&E infrastructure and content to continue to encourage solar self generation in Marin.

<p>and/or institutional facilities. As of October 18, 2008, PG&E has approved \$2.8M of financial support from the CSI for 323 projects within Marin.</p>	
<p>2. Self-Generation Incentive Program (SGIP): provides financial incentives for the installation of new, qualifying self-generation equipment installed to meet all or a portion of the electric energy needs of a facility. The incentive program currently supports wind energy and fuel cell projects. As of October 18, 2008, PG&E has approved \$8.5M of financial support from the SGIP for 22 projects within Marin.</p>	<ul style="list-style-type: none"> PG&E will continue to work with Marin to find ways to reduce barriers and limit the risks of distributed generation with the Marin community.
<p>3. Solar Mapping and Bill Tie in: PG&E is currently exploring a program that would merge solar mapping information with a customer’s energy use. Under the program, PG&E would work with Marin to explore options for linking best in class mapping systems (e.g., Google Earth) that could link roof space with customer billing data and would point toward the best candidates for solar installations.</p>	<ul style="list-style-type: none"> Currently PG&E is exploring a pilot in another city outside Marin and is looking to expand this program to other areas. Marin would be the next location.
<p>4. Purchase of Renewable Energy from Local Projects: PG&E purchases renewable energy from projects of all sizes, ranging from tens of KW to hundreds of MW. However, in order to simplify the procurement process for smaller entities that want to sell their power to PG&E, PG&E received approval from the CPUC earlier this year for a standard, short form contract for entities that generate up to 1.5 MW of renewable power. Under the “Small Renewable Generator” tariff, customers can choose to either sell all of their output to PG&E, or displace a certain amount of on-site load and sell the surplus to PG&E. Contracts can be for lengths of 10, 15 or 20 years, with a different price schedule for each contract term. This new program has made it easier for renewable project developers to expand the range of options for project sizing and installation. PG&E has already signed up a number of customers on this standard form contract. Changes under consideration by the CPUC may make this tariff more attractive to prospective sellers.</p>	<ul style="list-style-type: none"> PG&E proposes to work with Marin to promote the Small Renewable Generator Tariff to candidate projects through various means, such as education and outreach.
<p>5. Local Government Investment in Renewables: Marin may wish to directly invest in renewable projects, beyond those which it can install to serve site load with support from PG&E incentive programs. As discussed above, Marin could develop renewable projects and sell power to PG&E under the Small Renewable Generator tariff or through competitive solicitations. Furthermore, AB 2466, recently signed into law, would allow PG&E to provide a bill credit on one or more of a city’s or county’s electric accounts based on the electricity the city or county generates from a nearby renewable generating facility. AB 2466 would likely enable Marin to install renewable energy generating facilities in locations where little or no energy consumption occurs and get a credit on Marin’s PG&E bill for energy use at one or more designated facilities.</p>	<ul style="list-style-type: none"> PG&E proposes to provide technical assistance to Marin to help maximize use of this program, including help in identifying creative financing approaches.
<p>6. Solar Water Heating: PG&E supported AB 1470, the Solar Water Heating and Efficiency Act of 2007, which provides incentives to install 200,000 solar water heating systems in the state by 2017. As the implementation process for this legislation moves forward at the CPUC, PG&E would like to work with Marin to identify appropriate sites for solar water heating systems and pre-screen these sites so that they are ready to move through the process once the program is launched. This program would more likely impact natural gas (as opposed to electricity) consumption; therefore, the GHG reductions have the potential to be even more significant.</p>	<ul style="list-style-type: none"> PG&E will collaborate with Marin to educate and inform residents in Marin of the value of Solar Water Heating and how customers can progress installing and seeking incentives once the program is authorized. PG&E proposes to work with Marin to seek out

	<p>and pre-screen sites to move through the process when the program is launched.</p>
<p>7. Green Electricity: PG&E is currently exploring the development of a new tariff option which would allow customers across our service territory to purchase additional renewable electricity. PG&E is currently in the process of defining the parameters of this tariff option, but anticipates that it will be comprised of a mix of renewable resources that are currently included in PG&E’s existing renewable procurement program, e.g., wind, solar, small hydro, biomass, etc, along with renewable energy certificates (RECs). Depending on the enrollment levels in specific areas, PG&E would be able to use some of the proceeds to support the development of local renewable projects. The price premium relative to the customer’s otherwise applicable rate is currently being estimated, and other tariff requirements (such as any minimum commitments) are also being developed. This tariff would require approval by the CPUC.</p>	<ul style="list-style-type: none"> Assuming PG&E proceeds with and receives CPUC approval of a Green Tariff filing, PG&E would work jointly with Marin, as well as other communities within our service area that are interested in this type of tariff, to actively and broadly offer it to our customers. This tariff option is different than the local solar options described in #2 above.
<p>8. Community Solar: PG&E is currently exploring a program that would increase public awareness of solar generation. Under the program, PG&E would install, own and maintain solar photovoltaic (PV) generation on community buildings or spaces such as libraries, civic centers and fire/police stations. These solar installations could be placed in locations highly visible and frequently visited by the public. An educational kiosk would be located near the solar facility that will include information on solar PV generation including the actual operating characteristics of the nearby installation. The number of sites and their locations are under discussion, and PG&E welcomes suggestions from Marin on program design, as well as possible appropriate sites. This program would require approval by the CPUC.</p>	<ul style="list-style-type: none"> Assuming this program is filed with and approved by the CPUC, PG&E would work jointly with Marin, as well as other communities within our service area, to identify appropriate community sites for solar PV installations such as large-scale deployments (i.e., public/government/school buildings, commercial rooftops, and institutional facilities) and residential rooftop PV would continue to be eligible for rebates under the existing California Solar Initiative program administered by PG&E.

Element #2—Integrated Resource Planning

To accomplish this ambitious and innovative greenhouse gas reduction goal in Marin, PG&E’s intent is to work with local governments via an integrated resource planning approach to reduce GHG emissions, manage energy use and employ evaluation, measurement and verification techniques that quantify the impacts of these actions so they can continue to be adjusted in order to ensure long-term effectiveness.

As demonstrated throughout this proposal, PG&E’s proposed Partnership Plan is all encompassing as compared to the Marin Clean Energy CCA plan. PG&E’s plan offers to collaborate with Marin on a comprehensive integrated

implementation plan with strategies such as increasing the use of local renewable energy and energy efficiency throughout the County. The plan would also include benchmarks, an action plan, and a determination of metrics to assess progress and success. An integrated approach to GHG reductions will help the County achieve its goals faster and cheaper with better results. Other elements of an integrated resource planning approach to the Marin-PG&E Greenhouse Gas Reduction and Renewable Energy Program could include:

Proposed Program Components for Integrated Resource Planning	
Elements of Integrated Resource Planning	Proposed Action
<p>1. <u>Support For Long-term Energy Strategies under AB 32 and SB 375</u>. Focus on strategies that support long-term energy savings and the implementation of local renewables and “green” electricity to reduce greenhouse gas emissions to achieve and surpass goals set by Marin, the CPUC Energy Efficiency program, and the targets established under AB 32 and SB 375, relating to reduced GHG emissions from transportation and land use.</p>	<ul style="list-style-type: none"> PG&E would partner with Marin to develop and fund a collaborative integrated resource plan drawing from the elements described in this plan to reduce GHG emissions, increase renewables and leverage multiple stakeholders for regional application.
<p>2. <u>Integrate Knowledge and Resource of Others</u>. Leverage resources, commitments, and global approaches to sustainable communities to reduce GHG emissions from energy consumption, transportation, urban sprawl, and out-dated building and development practices.</p>	<ul style="list-style-type: none"> PG&E and Marin would access and utilize tools regarding land use and energy.
<p>3. <u>PG&E Resource Coordination</u> Access to PG&E resources and coordination among renewable energy, energy efficiency, demand response, and self generation programs for Marin citizens, including consumers, businesses and public agencies</p>	<ul style="list-style-type: none"> PG&E would assign a point person to help leverage and coordinate access to PG&E resources and provide relevant energy data for Marin to implement GHG emissions reduction and renewable energy strategies and identify barriers and opportunities that help aggregate offers to Marin citizens.
<p>4. <u>Data Analysis</u>. Providing performance/use/penetration data for the various strategies that are developed. This would include annual data to implement GHG emissions reduction strategies and identification of barriers and opportunities using existing resources</p>	<ul style="list-style-type: none"> PG&E would use existing resources to provide energy data that can help Marin target most effective areas for strategic analysis of barriers and opportunities of reducing GHGs.
<p>5. <u>ClimateSmart</u>. PG&E proposes to work with Marin to maximize the participation of residents, businesses and government-owned facilities on ClimateSmart. ClimateSmart is an innovative tariff where customers voluntarily pay an additional amount on their monthly bill (based on energy usage), to neutralize the carbon footprint that both their electric and gas consumption has on global warming. 100% of the funds generated by this ClimateSmart program go directly to fund new greenhouse gas emission reduction projects in California, including those that preserve and restore</p>	<ul style="list-style-type: none"> PG&E and Marin would collaborate to educate, promote and enroll participants in the program as part of their integrated GHG and renewables plan.

<p>California’s forests and capture methane gas from dairy farms. To ensure the integrity of the program, all of ClimateSmart’s GHG reduction projects are independently verified, audited and registered with the California Climate Action Registry</p>	
---	--

Element #3--Locally Managed Integrated Energy Efficiency Programs

In collaboration with PG&E, Marin would implement programs for municipal facilities, businesses and residents to reduce energy usage in the most efficient and cost-effective manner. Working with Marin cities and community organizations, PG&E will offer its extensive expertise and resources across a broad range of programs to support locally managed strategies and implementation to meet Climate Action/GHG reduction goals.

<p>Proposed Program Components for Energy Efficiency Programs</p>	
<p>Elements of Existing PG&E Program</p>	<p>Proposed Action</p>
<p>1. <u>Energy Efficiency</u>. Subject to CPUC approval of funding and program rules, PG&E expects to fund \$3.6M in Marin in the 2009-2011 program cycle for energy efficiency funds for a comprehensive, diversified portfolio of cost-effective programs aimed at providing both short-term and long-term savings to the residential and commercial sectors of Marin.</p> <p>Activities in the 2009-11 period are expected to include continued support for peer networking, team building and staff training in the public sector, implementation of energy efficient measures in public facilities, schools, cities and special districts, a full-service audit and direct install energy efficiency program for small businesses, and a youth employment training program whose goals are to educate the public about energy efficiency and sustainable behaviors and provide audits and direct install services to residences.</p>	<ul style="list-style-type: none"> • Subject to CPUC approval, PG&E would negotiate a scope of work with Marin County Energy Watch for the activities described under item 1 for up to \$3.6 million contingent upon performance. PG&E would focus the partnership on delivering a highly leveraged integrated set of strategies to maximize the GHG reductions from this, the most cost effective of all strategies. • The Marin Energy Watch program management plan will establish milestones for the program’s goals, including delivering energy efficiency savings. PG&E will regularly review milestone achievements and program spending and an additional Local Government Partnership performance pool will be used to reward well-performing partnerships and to initiate new partnerships. Likewise, if performance is not on track to meet the planned goals and spending rates, PG&E and its partners will develop a performance improvement plan to maximize the Partnership performance and reduce budget allocations. If there is not enough funding to reward the performance of Marin and other high performing partners through the end of the 2009-2011 cycle, PG&E expects to request Marin to join in making an official request for additional funds to the CPUC to support the proposed Marin activities.
<p>2. <u>Water Energy Pilot (July 2008-July 2009)</u>. PG&E and other water districts, including Marin Municipal Water District, have been working together to implement a CPUC approved pilot project focused on saving energy related to water use. The parties are identifying</p>	<ul style="list-style-type: none"> • Selected customers will be offered water audits and will receive incentives from the water district and PG&E to retrofit their facilities to reduce water use and the associated energy use. Energy savings from pilot projects implemented in Marin will be

<p>strategic large commercial customers to participate in the pilot program.</p>	<p>reflected in aggregate GHG data that PG&E provides to Marin.</p>
<p>3. Standards Education and Training. PG&E has applied for funding in 2009-11 to assist local governments to improve codes compliance and optimize appropriate regulatory authority to promote energy efficiency. If approved, under this program, Marin will be eligible to apply for services such as Standards Education and Training. Proposed pilots include improving standards compliance (including Title 24), as well as process improvement tools, support for staff and local market actors, support for market studies and tracking compliance (including support for revisions to CPUC evaluation and attribution protocols).</p>	<ul style="list-style-type: none"> PG&E would assistance Marin with access to tools and programs on local codes and new codes once compliance exists with existing codes.
<p>4. On Bill Financing. PG&E is developing an on-bill financing program that will invoice customers for energy efficient projects through the PG&E bill. While subject to Regulatory approval, PG&E hopes to offer this financing to a customer segment within our Institutional, taxpayer-funded customer base such as State or local government entities whose facilities are served by PG&E, upon CPUC approval of the 2009-2011 filing, with a later pilot program for small commercial customers.</p>	<ul style="list-style-type: none"> As part of the Energy Watch partnership, PG&E will keep Marin apprised of progress regarding On Bill Financing and endeavor to engage Marin in a potential future OBF program for local governments.

Element #4—Transportation

PG&E continues to seek innovative opportunities to coordinate as appropriate with Marin transportation and community development planners to assist in planning and promoting the safe and efficient use of electricity and natural gas as transportation fuels. Our existing partnerships with Plug-In Partners and Plug-In Bay Area promote the development and deployment of plug-in hybrid and dedicated electric technology. We propose to expand on our transportation partnerships by offering the following program components.

Proposed Plan Elements for Transportation	Proposed Action
<p>Transportation. PG&E would expand its collaboration with Marin to assist in meeting the new regional transportation-related greenhouse gas reduction goals to be established under SB 375. This will include identifying additional strategies for clean air transportation and strategies to reduce vehicle miles traveled within Marin. Options for collaboration include electrification of the transportation sector that is beneficial to PG&E and Marin.</p>	<ul style="list-style-type: none"> PG&E proposes to convene a dedicated task group to identify opportunities for leveraging Marin and PG&E’s resources to promote clean air transportation and meet the goals of SB 375, including: <ul style="list-style-type: none"> ➤ accelerating the deployment of needed infrastructure, such as residential and commercial charging stations, ➤ Promoting new markets for plug-in hybrid electric vehicles and employer-sponsored incentives for carpooling and use of mass transit and clean air vehicles in the Marin-Sonoma Route 101 corridor.

Element #5—Green Career Pathways

PG&E continues to support local educational and workforce training initiatives that contribute to building pathways to careers in the green industry and enables local residents to benefit from market transformations occurring as California aligns with AB 32 and Climate Protection goals. This includes current charitable funding for Marin Conservation Corps and Marin Link-Next Generation Green Schools Program. Subject to CPUC approval, PG&E would also include funding through the Marin Energy Watch Partnership (MCEW) to train young adults to deliver residential audits, install energy efficiency measures and market and outreach in local communities. The Marin-PG&E Renewable Energy Program could include the following additional program component for green career pathways:

Proposed Plan Elements for Green Career Pathways	Proposed Action
<ul style="list-style-type: none"> • Solar and Renewable Energy Job Training. As part of the solar energy PV and renewable energy program, PG&E and Marin would collaborate with schools and job training entities to apply for federal, state and non-profit job training grants to enable the hiring and training of low-income Marin County workers to perform construction, installation and maintenance of PV and other renewable energy facilities. 	<ul style="list-style-type: none"> • PG&E would collaborate with Marin to identify and assist eligible schools in Marin to apply for grants and lead the efforts in working with established educational entities and Marin solar companies to facilitate bringing the multiple parties together.
<ul style="list-style-type: none"> • Green the Non-Profit Sector. PG&E has initiated discussions with the Marin Community Foundation regarding the joint creation of a fund that will leverage resources to make up the difference for non-profits between PG&E’s existing support for energy conservation and renewable investments. 	<ul style="list-style-type: none"> • PG&E would partner with Marin Community Foundation to mutually establish fund for non-profits for energy conservation and renewable investments.

Summary and Next Steps

The proposed Partnership Plan PG&E is offering includes what we believe to be realistic estimates as to potential greenhouse gas reductions that can be achieved if the entire package were to be adopted and implemented. This Plan provides:

- Shared responsibilities that are clearly identified in advance,
- In addition to jointly agreeing on objectives, the local governmental entity would take responsibility for land use and permitting issues, and PG&E would handle technical issues and project development.
- PG&E carrying out all Partnership operations with regular consultation and collaboration, and

- Forming a structure for a managing committee that would oversee all programs with joint administration by the Marin public sector and PG&E partners.

As emphasized in the introduction, the most important advantage of this Partnership Plan would be reduction of greenhouse gas emissions for electricity in participating communities by nearly 40% compared to PG&E's already low emissions, or 102,000 metric tons per year by 2020. This compares favorably to Marin Clean Energy, which we estimate will **increase** emissions for electricity by 51,000 metric tons per year by 2020. Our comprehensive Partnership plan would cut greenhouse gas emissions rates in Marin to 318 pounds per megawatt-hour by 2020, just over half the amount generated by Marin Clean Energy.

We propose that the interested Marin local governments convene a group including staff and representatives from the broader community to take an unbiased look at the proposed Partnership Plan. We also ask that the group come back to the interested parties within a short period of time with a report as to whether this Partnership can work and, if it can, that Marin and PG&E exercise our mutual efforts to make it happen. PG&E stands ready for discussion to start immediately. If the process begins right away, agreement on goals, timelines, benchmarks and programs can be completed during the first half of 2009 and regulatory steps would be well underway in advance of the January 1, 2010 implementation date.

PG&E offers the following timeline and actions for consideration:

Date	Action
December, 2008	PG&E Presentations to the County and Other Marin Towns and Cities
December, 2008	County, towns and cities appoint staff to discuss mutual projects and programs that could be included in Marin-PG&E Partnership
January-March, 2009	PG&E, Marin County, towns and cities identify mutual projects and programs, solicit public comment
June, 2009	PG&E, Marin County, towns and cities agree on Green Partnership
January, 2010	PG&E, Marin County, towns and cities begin implementation of projects, programs