

*Marin Community
Choice Aggregation
Project – Local
Government Task
Force Update*

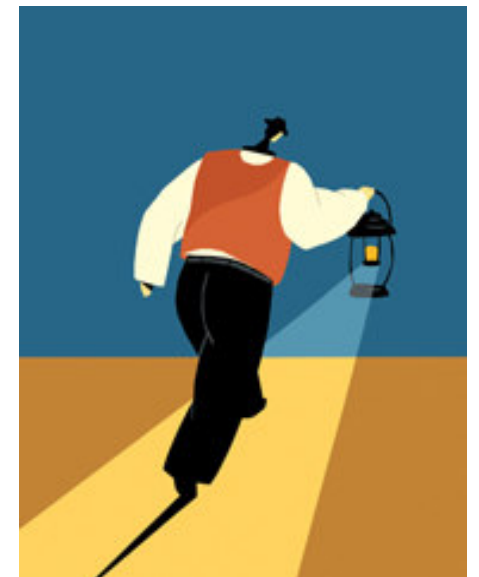
December 6, 2007

Option 2 Analysis: 100% Renewable
Supply Goal

Schedule Update

Questions

NAVIGANT
CONSULTING



*Option 2 Analysis:
100% Renewable Supply Goal*

100% Renewable Energy Supply Alternative – Program Comparison

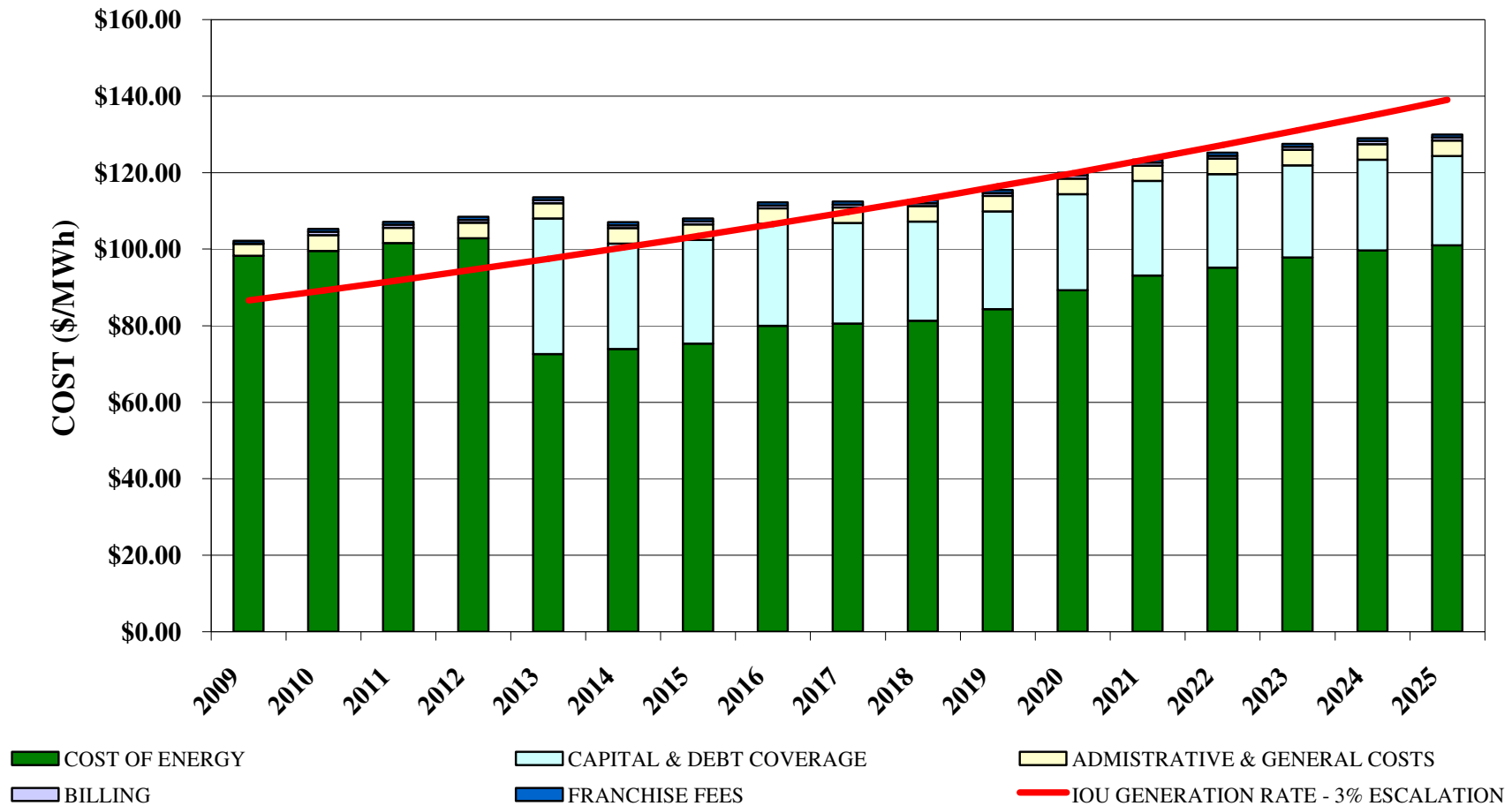
	Status Quo	Option 1	Option 2
Renewable Supply %	12%	25-51%	100%
Typical Cost - Year 1 (\$/month)	\$ 82.88	\$ 82.88	\$ 90.92
Typical Cost - Year 5 (\$/month)	\$ 93.29	\$ 91.82	\$ 96.59
Typical Cost - Year 10 (\$/month)	\$ 108.14	\$ 104.08	\$ 107.65
Typical Cost - Year 15 (\$/month)	\$ 125.37	\$ 120.16	\$ 122.38
GHG Reduction	0	6-12%	12-20%
Expected Participation	Not Applicable	84%	84% (50%/34%)

Program participation rates are based on Marin’s recent Resident Satisfaction Survey. Assumes large commercial customers opt for lower cost option (“Light Green” tariff).

84% overall participation (50% choose 100% Green tariff; 34% choose Light Green tariff).

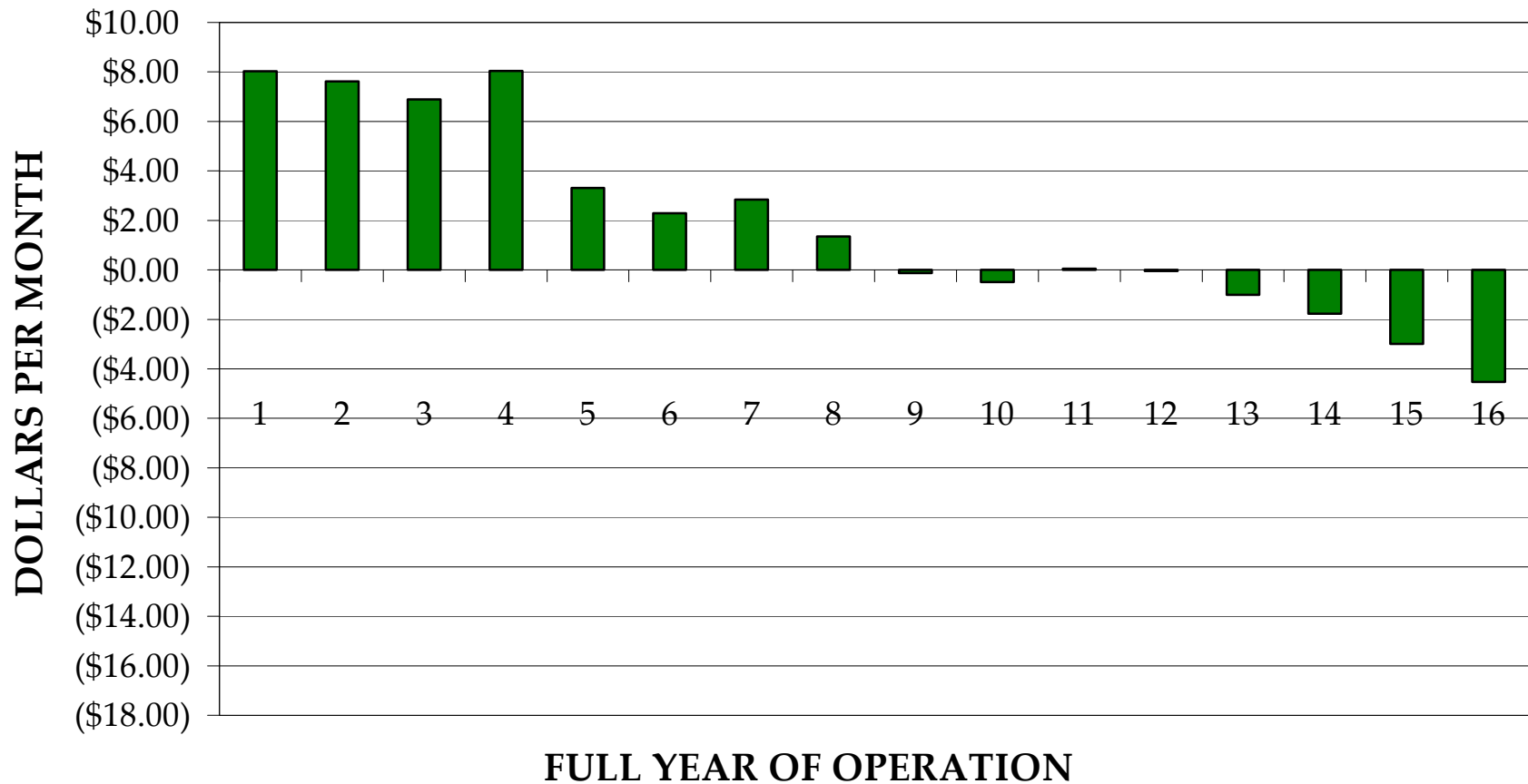
100% Renewable Energy Supply Alternative – Average System Cost

MARIN POWER AUTHORITY 100% RENEWABLE ENERGY PROGRAM - AVERAGE SYSTEM COST COMPARISON



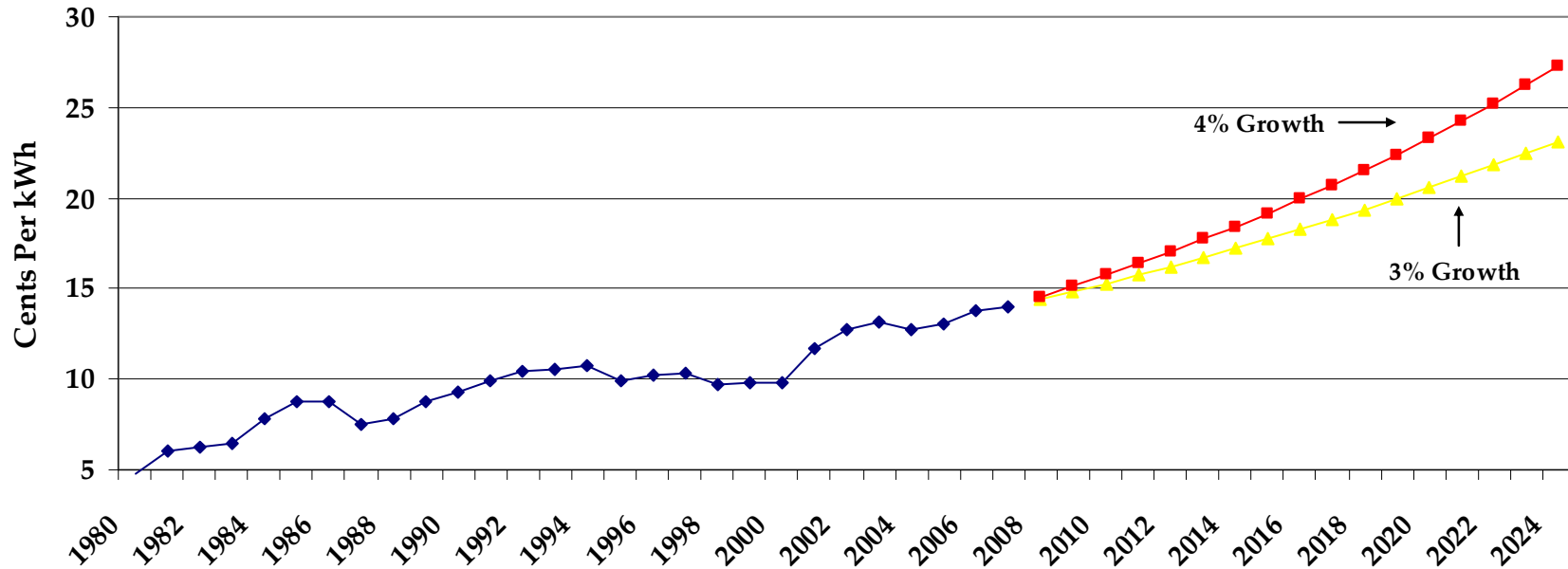
100% Renewable Energy Supply Alternative – Monthly Cost Premium 3% Utility Rate Growth

MARIN POWER AUTHORITY 100% RENEWABLE ENERGY PROGRAM PREMIUM RESIDENTIAL CUSTOMER USING 500KWh/MONTH



Utility Rate Projections

PG&E Electric Rate History and Forecast
(System Average Rate)



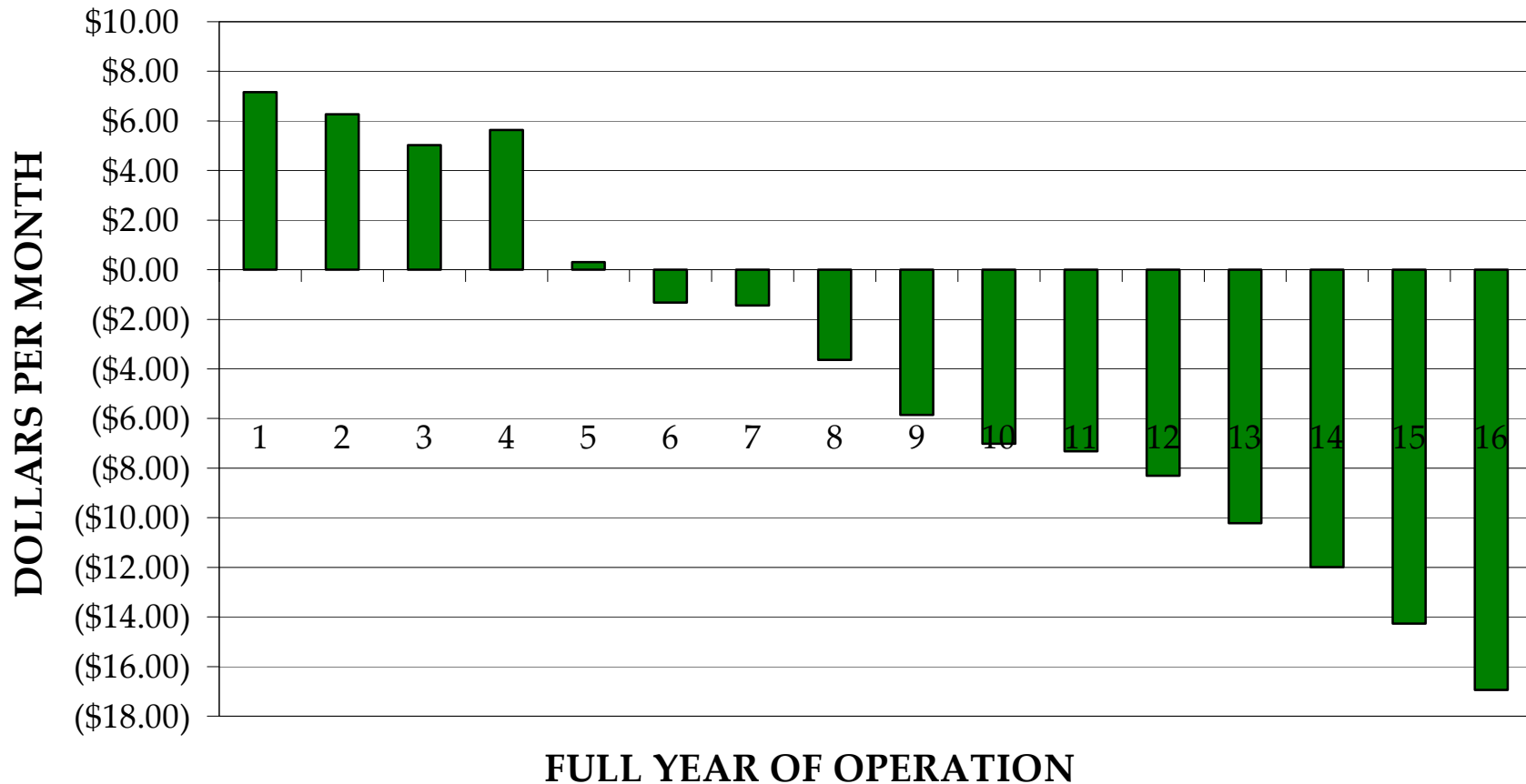
Marin’s Draft Business Plan assumes 3% growth in PG&E’s system average rate.

Since 1998, PG&E generation rates have increased an average of 3.4% per year.

Escalating PG&E’s system average rate at 4% significantly expedites cost benefits to program customers!

100% Renewable Energy Supply Alternative – Monthly Cost Premium 4% Utility Rate Growth

MARIN POWER AUTHORITY 100% RENEWABLE ENERGY PROGRAM PREMIUM RESIDENTIAL CUSTOMER USING 500KWh/MONTH



Schedule Update

Updated Timeline for Program Implementation

ACTIVITY	TIMELINE	OFF RAMP?
Complete Business Plan	February 2008	
<i>Task Force Recommendation to Proceed</i>	<i>March 2008</i>	<i>YES</i>
Complete JPA Agreement	March 2008	
Develop Draft Implementation Plan	March 2008	
<i>City and County Ordinances</i>	<i>April 2008 – December 2008</i>	<i>YES</i>
Commencement of the Authority	+30 Days	
Issue Supplier Request for Bids and Select Seller	+30 Days	
<i>Approve Implementation Plan</i>	<i>+120 Days</i>	<i>YES</i>
<i>Approve Program Agreement 1</i>	<i>+120 Days</i>	<i>YES</i>
File Implementation Plan with CPUC	+120 Days	
<i>Final Go/No Go Decision by the Marin Power Authority</i>	<i>+200 Days</i>	<i>YES</i>
Execute Supplier/Vendor Contracts	+300 Days	
Go live phase 1	+330 Days	

Questions, Comments & Discussion

Questions?

NCI Contacts



Kirby Dusel | Associate Director
kdusel@navigantconsulting.com
916.834.0684



John Dalessi | Director
jdalessi@navigantconsulting.com
916.631.3200